



2020 Cap Complete

2020 Cap Complete, an all-in-one space planning office design application. This new version of 2020's industry standard software provides the ability to design, specify and visualize office spaces incorporating a powerful, fully integrated CAD system. 2020 Cap Complete is equipped with the same powerful drawing and space planning capabilities as 2020 Cap, used by thousands of customers over many years, but with the addition of a built-in CAD system. There are no extra applications or add-ons to purchase.

2020spaces.com/2020CapComplete

2020 Cap Complete

The Challenge

The job of office furniture designers is to create innovative spaces and provide accurate furniture specifications. Their clients depend on delivery of precise, complete and on-budget projects. Designers need to have software available that can handle the largest and smallest projects efficiently and accurately, maximizing their business's productivity and profitability.

The Solution

2020 Cap Complete is the perfect solution for designing faster and with fewer errors thanks to the automation of time-consuming tasks and the most up-to-date catalogs in the industry. 2020 Cap Complete adapts to the way designers work while saving them time and enabling quicker delivery of projects to clients.

This integrated suite of software automates the design and specification process in your business and consists of three base applications, 2020 Cap Complete, 2020 Worksheet and 2020 Visual Impression. 2020 Worksheet is a powerful tool used for product specification, pricing and creating proposal while 2020 Visual Impression provides high-quality 3D renderings of your designs

A subscription model of 2020 Cap Complete is available and requires a simple software key to activate—customers can choose to buy online and be up and running in just a few minutes.

Benefits

Adapt to your processes

2020 Cap Complete's user interface and features are completely adaptable to existing business and sales processes. The software conforms to your business, not the other way around.

Get the latest product information

Receive the latest catalog content for over 200 manufacturers every month.

Increase planning accuracy

2020 Cap Complete contains the most complete, up-to-date and accurate planning symbol libraries in the industry.

Scale project planning

Create large-scale project drawings directly within 2020 Cap Complete.

Maximize productivity

2020 Cap Complete's automation and planning tools help your design teams maximize productivity by eliminating repetitive, time-consuming tasks.

Kimball® Office

"2020 Cap Complete handles Kimball's extensive automation just like 2020 Cap. Narrate and Xsite panel run elevations, connector and bracket generation all work the way they should."

—Carl Pfeiffer, eTool Applications Specialist
Kimball® International

Features

Fully-integrated CAD solution

Build space plans with our fully integrated CAD system. Easily communicate with architects and interior designers using .DWG and .DXF files.

Explorer

Control all your project data from one powerful interface, including manufacturer content, project hierarchies, custom catalogs, bookmarks and latest search results.

Automation tools

Speed up the design process and increase project accuracy with advanced design automation tools.

Take-off to 2020 Worksheet

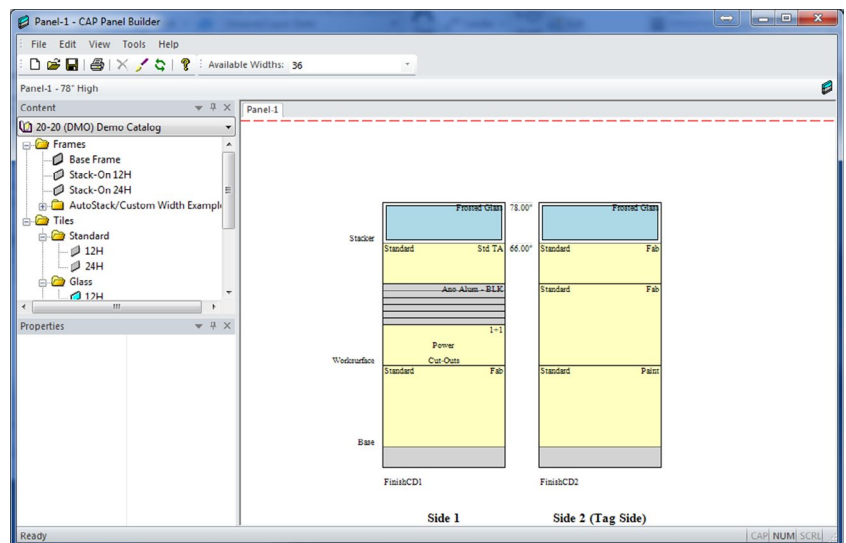
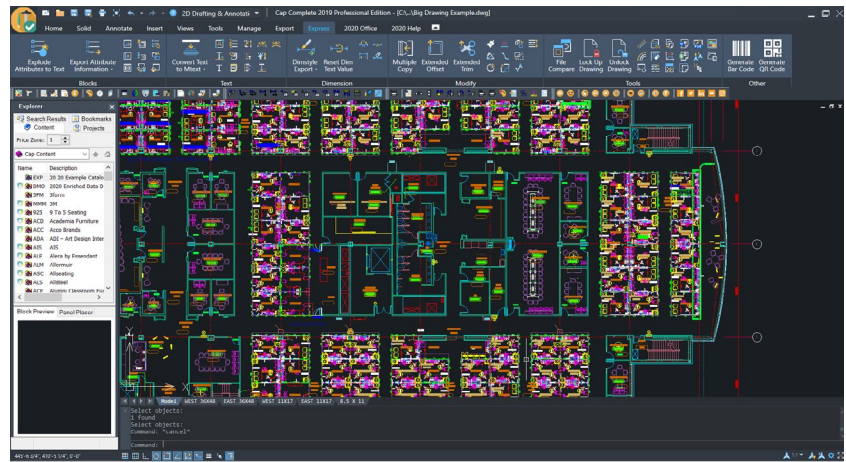
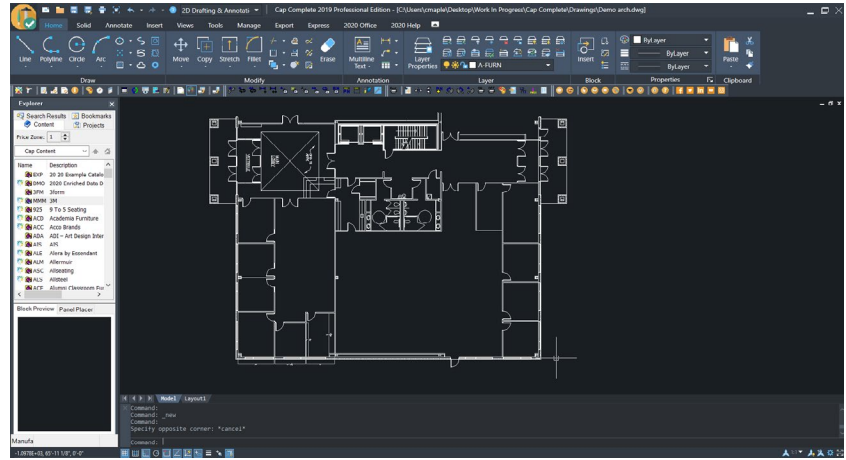
Effortlessly generate bills of materials in 2020 Worksheet from project drawings in 2020 Cap Complete. Do a traditional take-off creating a separate 2020 Worksheet file or use Associated Worksheets to allow drawing and 2020 Worksheet files to be synchronized and up to date in both applications.

2020 Cap standards

Powerful time savers let you create furniture configurations that can be stored and reused as a complete assembly. 2020 Cap standards save time, reduce errors and eliminate repetitive tasks.

2020 Visual Impression

Every license of 2020 Cap Complete comes with a companion license of 2020 Visual Impression that delivers amazing visuals for your project. Access designs on your iPad®, even when you're on the road!



Easily build complete frame and tile configurations using 2020 Cap Complete's Panel Builder technology. Panel Builder's rules-based technology helps avoid costly planning errors.

2020

About 2020

2020 helps professional designers, retailers and manufacturers in the interior design and furniture industries capture ideas, inspire innovation and streamline processes. By providing end-to-end solutions and the world's largest collection of manufacturers' catalogs, 2020 provides businesses with the software and content to be more efficient, integrated and productive.



Professional

Enabling professional designers to create kitchens, bathrooms, closets and commercial offices which look as stunning on the screen as they will in reality.



Manufacturing

Providing furniture and cabinet manufacturers a complete manufacturing operations management capability developed to meet their needs.



Retail

Empowering interior home improvement retailers to inspire the imagination of their customers and accelerate decision making.



For system requirements, please visit 2020spaces.com/install

TF: +1.800.227.0038 T: +1.616.454.0000 F: +1.616.454.4140 E: office.sales@2020spaces.com

2020spaces.com

2020 Headquarters

20-20 Technologies, Inc.
400 Armand-Frappier Blvd.
Suite 2020
Laval, QC Canada H7V 4B4

Worldwide Offices

Americas
Laval, QC, Canada
Cary, NC, USA
Foxboro, MA, USA
Grand Rapids, MI, USA

Europe
Wiener Neustadt, Austria
Mouans-Sartoux, France
Osnabrück, Germany
Ashford, UK
Bolton, UK

Asia-Pacific
Guangzhou, China
Shanghai, China
Pune, India